



CUSTOMER:

Customer Name: ALINVEST CZ

PROJECT:

Project Code: E2558

Project Name: ALINVEST CZ

DOCUMENT INFORMATION:


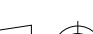
Document Title: Equipment Spider Diagram

Customer File Name: 2558-3321-HGS-E-DWG-SPD

Customer Revision Number: A

Customer File Name: 2558-3321-HGS-E-DWG-SPD

Contractor Revision Number: A

						CONTRACTOR		CONTRACTOR dwg number 2558-3321-HGS-E-DWG-SPD	Rev. A	Project Code E2558	Project Name ALINVEST CZ			
										Document Title Equipment Spider Diagram			Scale 1:1	
A	01/12/2025	INITIAL VERSION		RORI	RORI					RORI	CLIENT dwg number 2558-3321-HGS-E-DWG-SPD	Rev. A	DESIGNED: ANSA	
Rev.	Date	Revisions description		Designed	Draw	Approved	CLIENT		DATE: 01/12/2025	DATE: 01/12/2025	DATE: 01/12/2025		Sheet 1 OF x	
1		2	3	4					5	6	7		8	9

POWER AND CONTROL PANEL



r43.62-3321-HGS-GEN00-PCP01

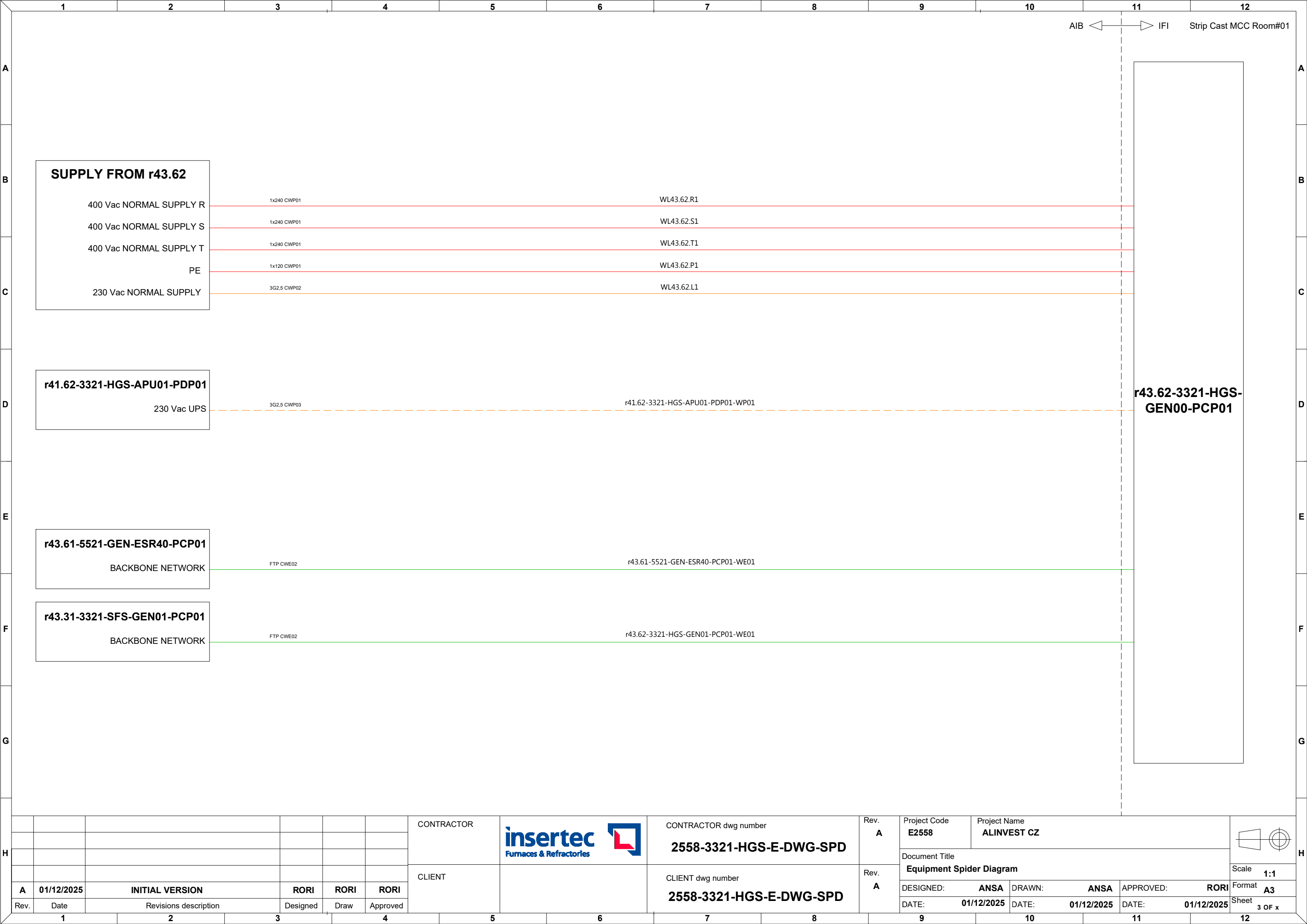
LEGEND

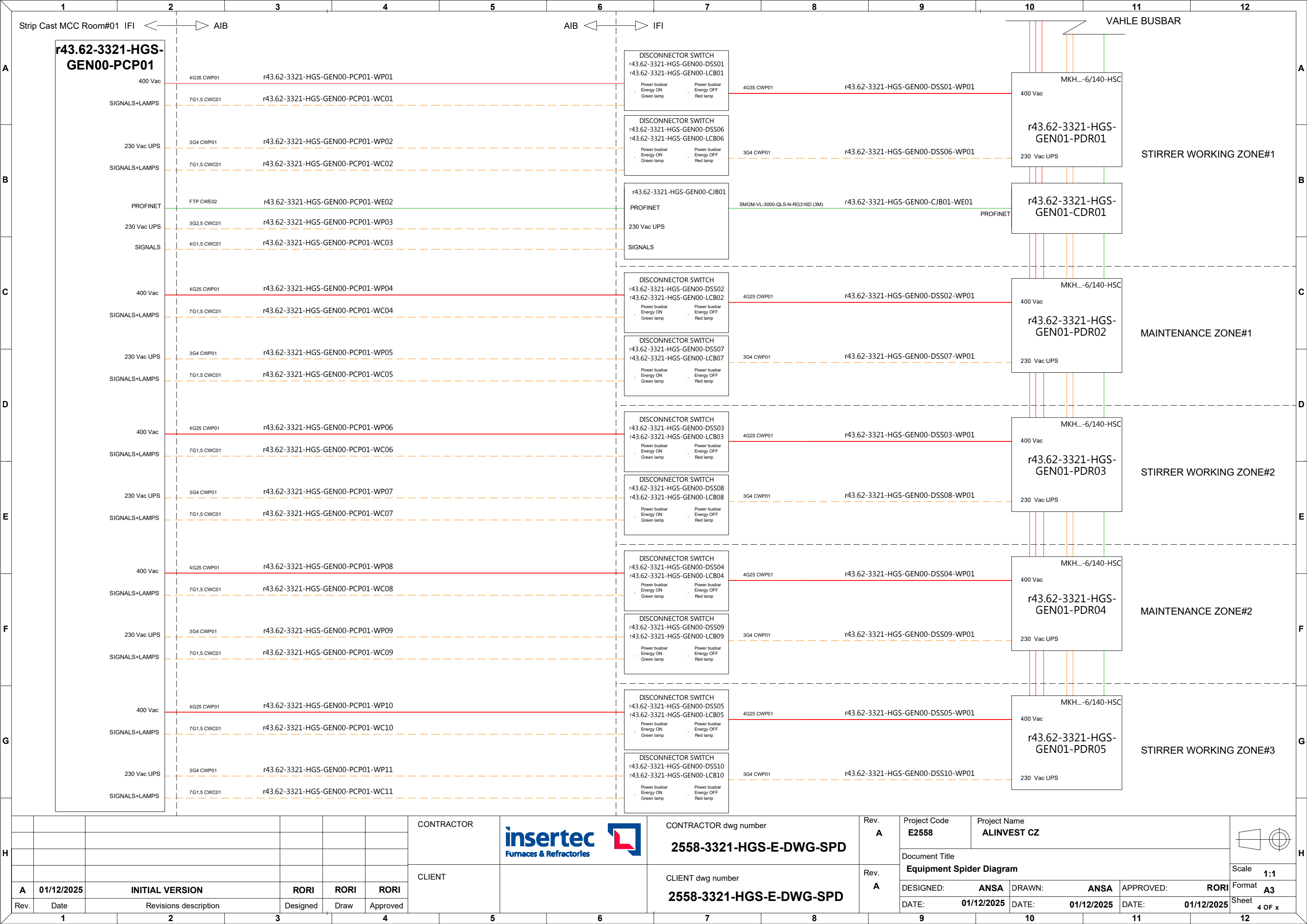
	400Vac Power supply		Regular control signals
	400Vac UPS power supply		Analog & shielded signals
	230Vac Power supply		T/C connection
	230Vac UPS power supply		Communication connection

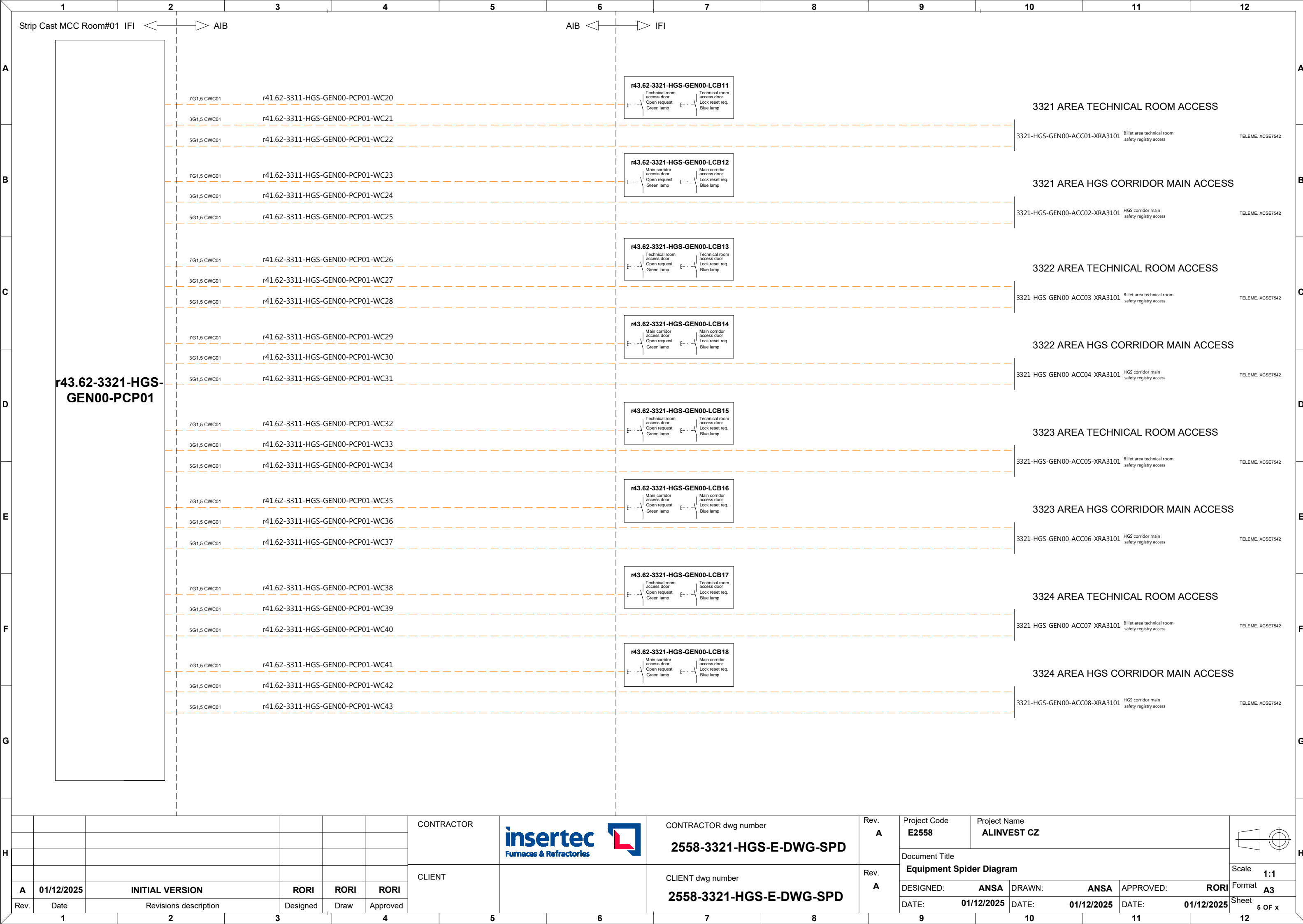
CATEGORY

Power cables
CWP01: Regular power cables
CWP02: Shielded power cable
CWP03: Flexible power cables
CWP04: Regular high temperature power cables
Instrumentation and control cables
CWC01: Regular instrumentation control cables
CWC02: Shielded instrumentation control cables
CWC03: Thermocouple cable
CWC04: Flexible instrumentation control cables
CWC05: High voltage cables for ignition transformers
CWC06: Regular high temperature instrumentation control cables
Communication cables
CWE01: Fieldbus communication cable (Inside cabinets)
CWE02: Fieldbus communication cable (Outside cabinets)
CWE03: Optic fibre communication cable

						CONTRACTOR	<div><div>insertec</div><div>Furnaces & Refractories</div></div> <div></div>	CONTRACTOR dwg number 2558-3321-HGS-E-DWG-SPD	Rev. A	Project Code E2558	Project Name ALINVEST CZ			<div></div>
										Document Title Equipment Spider Diagram			Scale 1:1	
A	01/12/2025	INITIAL VERSION		RORI	RORI					RORI	DESIGNED: ANSA	DRAWN: ANSA	APPROVED: RORI	
Rev.	Date	Revisions description		Designed	Draw	Approved	CLIENT	CLIENT dwg number 2558-3321-HGS-E-DWG-SPD	Rev. A	DATE: 01/12/2025	DATE: 01/12/2025	DATE: 01/12/2025	Sheet 2 OF x	















POWER INPUT & OUTPUT

r43.62-3321-HGS-TRS01-PIO01

LEGEND

	400Vac Power supply		Regular control signals
	400Vac UPS power supply		Analog & shielded signals
	230Vac Power supply		T/C connection
	230Vac UPS power supply		Communication connection

CATEGORY

Power cables
CWP01: Regular power cables
CWP02: Shielded power cable
CWP03: Flexible power cables
CWP04: Regular high temperature power cables
Instrumentation and control cables
CWC01: Regular instrumentation control cables
CWC02: Shielded instrumentation control cables
CWC03: Thermocouple cable
CWC04: Flexible instrumentation control cables
CWC05: High voltage cables for ignition transformers
CWC06: Regular high temperature instrumentation control cables
Communication cables
CWE01: Fieldbus communication cable (Inside cabinets)
CWE02: Fieldbus communication cable (Outside cabinets)
CWE03: Optic fibre communication cable

CONTRACTOR



CONTRACTOR dwg number

2558-3321-HGS-E-DWG-SPD

Rev.

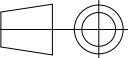
A

Project Code

E2558

Project Name

ALINVEST CZ



CLIENT

CLIENT dwg number

Rev.

A

Document Title

Equipment Spider Diagram

Scale

1:1

DESIGNED:

ANSA

DRAWN:

ANSA

APPROVED:

RORI

Format

A3

DATE:

01/12/2025

DATE:

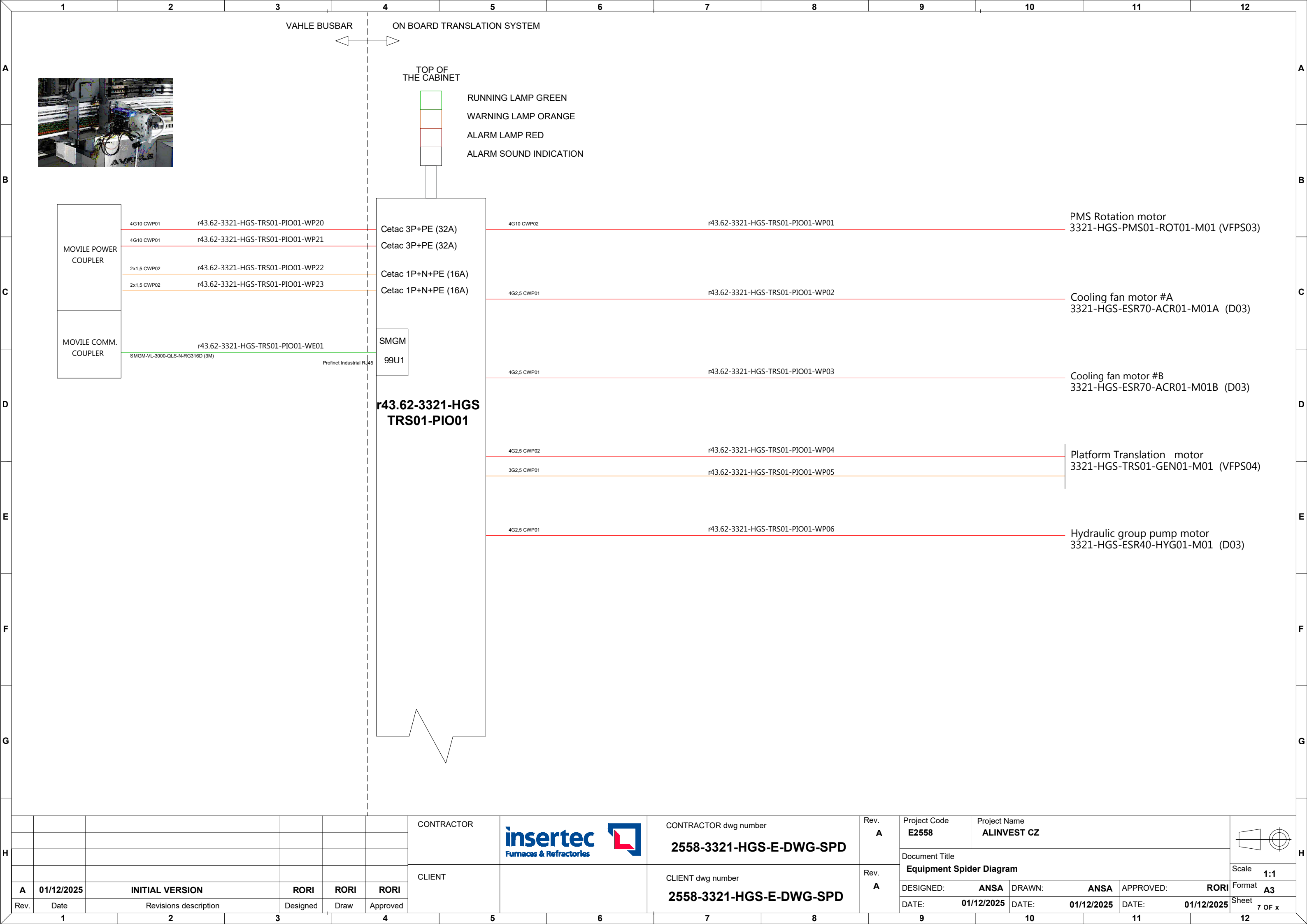
01/12/2025


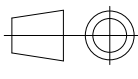
DATE:

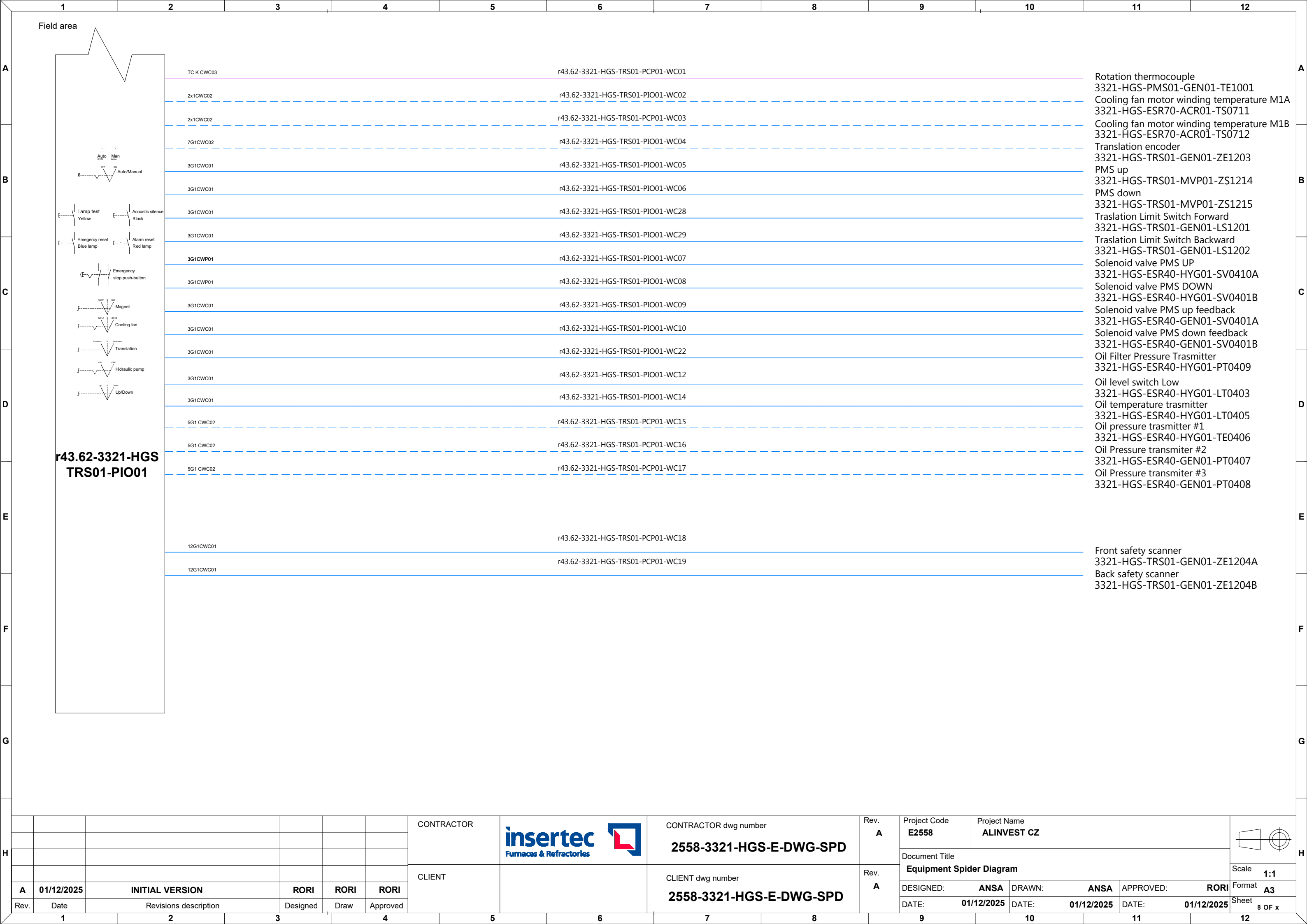
01/12/2025

Sheet

6 OF x



H							CONTRACTOR		CONTRACTOR dwg number 2558-3321-HGS-E-DWG-SPD	Rev. A	Project Code E2558	Project Name ALINVEST CZ		H									
						CLIENT		CLIENT dwg number 2558-3321-HGS-E-DWG-SPD	Rev. A	Document Title Equipment Spider Diagram			Scale 1:1										
	A	01/12/2025	INITIAL VERSION		RORI					RORI	RORI	DESIGNED: ANSA	DRAWN: ANSA		APPROVED: RORI	Format A3							
	Rev.	Date	Revisions description		Designed					Draw	Approved	DATE: 01/12/2025	DATE: 01/12/2025		DATE: 01/12/2025	Sheet 7 OF x							
1		2		3		4		5		6		7		8		9		10		11		12	



POWER INPUT & OUTPUT


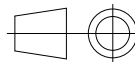
r43.62-3322-HGS-TRS01-PIO01

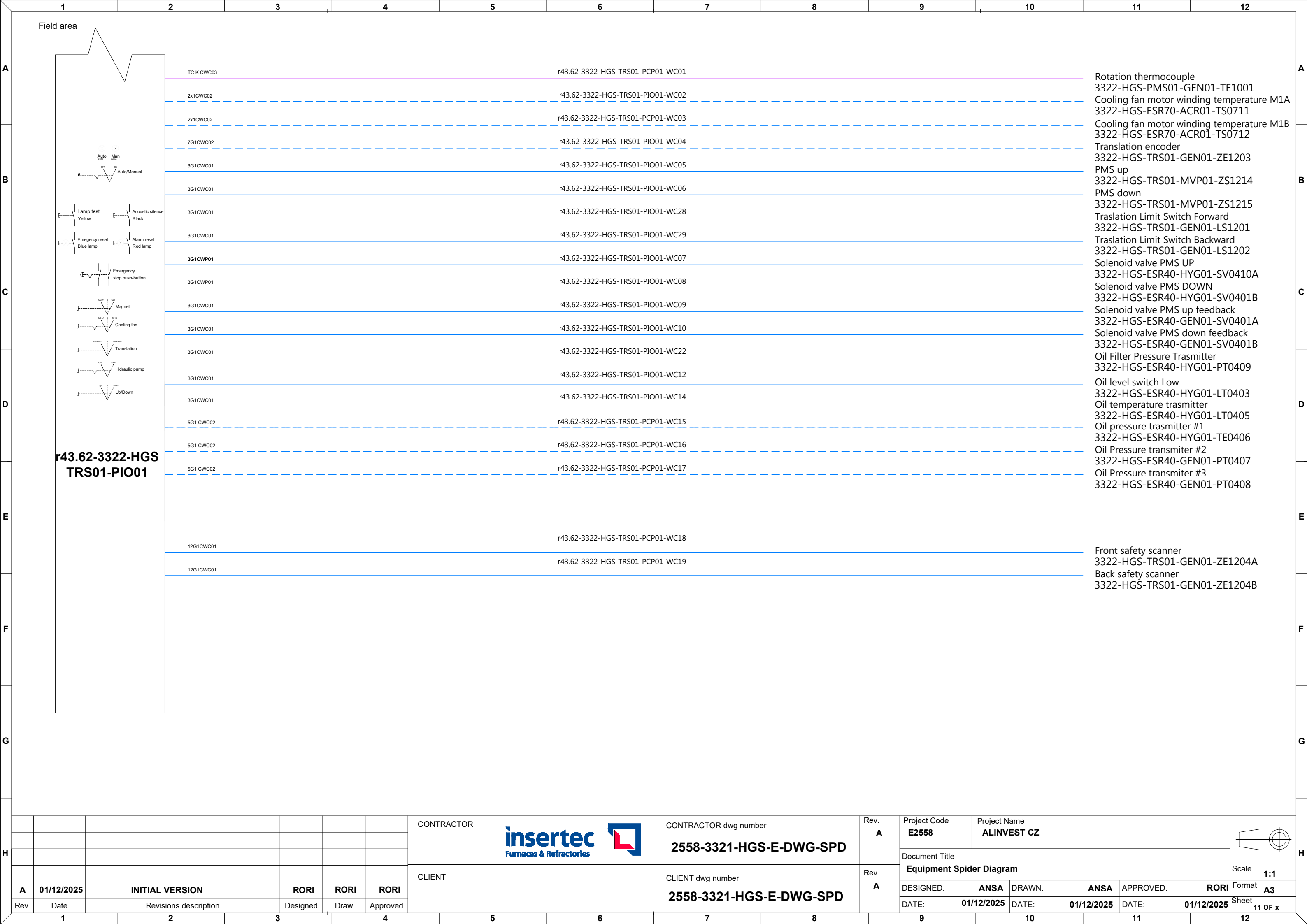
LEGEND

	400Vac Power supply		Regular control signals
	400Vac UPS power supply		Analog & shielded signals
	230Vac Power supply		T/C connection
	230Vac UPS power supply		Communication connection

CATEGORY

Power cables
CWP01: Regular power cables
CWP02: Shielded power cable
CWP03: Flexible power cables
CWP04: Regular high temperature power cables
Instrumentation and control cables
CWC01: Regular instrumentation control cables
CWC02: Shielded instrumentation control cables
CWC03: Thermocouple cable
CWC04: Flexible instrumentation control cables
CWC05: High voltage cables for ignition transformers
CWC06: Regular high temperature instrumentation control cables
Communication cables
CWE01: Fieldbus communication cable (Inside cabinets)
CWE02: Fieldbus communication cable (Outside cabinets)
CWE03: Optic fibre communication cable









						CONTRACTOR		CONTRACTOR dwg number	2558-3321-HGS-E-DWG-SPD	Rev. A	Project Code	Project Name			
											E2558	ALINVEST CZ			
											Document Title				
						CLIENT		CLIENT dwg number	Rev. A	Equipment Spider Diagram			Scale		
A	01/12/2025	INITIAL VERSION		RORI	RORI					RORI	Format				
Rev.	Date	Revisions description		Designed	Draw					Approved	Sheet				



POWER INPUT & OUTPUT


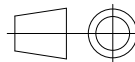
r43.62-3323-HGS-TRS01-PIO01

LEGEND

	400Vac Power supply		Regular control signals
	400Vac UPS power supply		Analog & shielded signals
	230Vac Power supply		T/C connection
	230Vac UPS power supply		Communication connection

CATEGORY

Power cables
CWP01: Regular power cables
CWP02: Shielded power cable
CWP03: Flexible power cables
CWP04: Regular high temperature power cables
Instrumentation and control cables
CWC01: Regular instrumentation control cables
CWC02: Shielded instrumentation control cables
CWC03: Thermocouple cable
CWC04: Flexible instrumentation control cables
CWC05: High voltage cables for ignition transformers
CWC06: Regular high temperature instrumentation control cables
Communication cables
CWE01: Fieldbus communication cable (Inside cabinets)
CWE02: Fieldbus communication cable (Outside cabinets)
CWE03: Optic fibre communication cable

						CONTRACTOR		CONTRACTOR dwg number 2558-3321-HGS-E-DWG-SPD	Rev. A	Project Code E2558	Project Name ALINVEST CZ				
										Document Title Equipment Spider Diagram			Scale 1:1		
A	01/12/2025	INITIAL VERSION		RORI	RORI					RORI	CLIENT		CLIENT dwg number		Rev. A
Rev.	Date	Revisions description		Designed	Draw	Approved				DATE: 01/12/2025	DATE: 01/12/2025	DATE: 01/12/2025	Sheet 12 OF x		
1	2	3	4	5	6	7	8	9	10	11	12				

